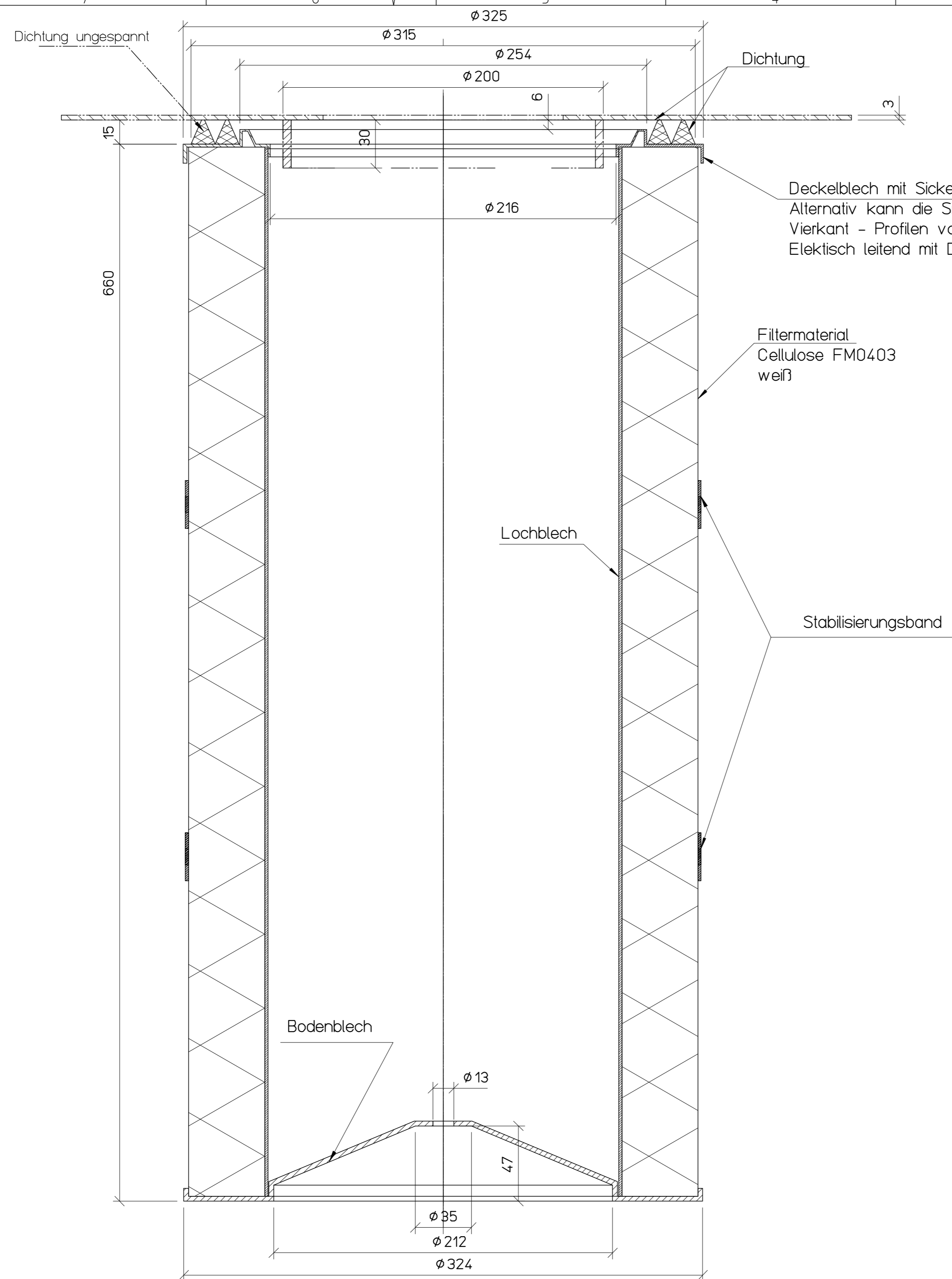


| | | | | | | | |
|--|--------|--|--|---|-------|--------|-------|
| SURFACE ROUGHNESS ACCORDING TO ISO 1302 | | GENERAL TOLERANCES FOR WELDING ACCORDING TO ISO 13720-AE | | LINEAR DIMENSION (MACHINED) | | ANGLES | |
| GRADE | SYMBOL | PROCESS | ANY PRODUCTION METHOD BY MACHINING WITHOUT REMOVAL OF MATERIAL | ABOVE | TOL. | UP TO | TOL. |
| N10 | 12.5 | ✓ | | 0 | +0.1 | 6 | +0.2 |
| N9 | 6.3 | ✓ | | 30 | +0.3 | 120 | +0.5 |
| N8 | 3.2 | ✓ | | 120 | +0.8 | 400 | +1.2 |
| N7 | 1.6 | ✓ | | 400 | +1.6 | 1000 | +2.0 |
| N6 | 0.8 | ✓ | | 1000 | +2.5 | 2000 | +3.0 |
| N5 | 0.4 | ✓ | | 2000 | +4.0 | 4000 | +5.0 |
| N4 | 0.2 | ✓ | | 4000 | +6.3 | 8000 | +8.0 |
| N3 | 0.1 | ✓ | | 8000 | +10.0 | 12000 | +12.5 |
| N2 | 0.05 | ✓ | | 12000 | +15.0 | 18000 | +20.0 |
| N1 | 0.025 | ✓ | | 18000 | +20.0 | 25000 | +25.0 |
| DO NOT DISCLOSE, REPRODUCE, OR USE THIS DOCUMENT FOR MANUFACTURE WITHOUT WRITTEN CONSENT OF WHEELABRATOR | | | | LIMENSIONED TOLERANCES ACCORDING TO ISO 2768-mK | | ANGLES | |
| Size: | A2 | Rev: | EC | Date: | | ABOVE | TOL. |
| Scale: | 1:2 | Created: | | 100505 | juwr | 0 | +0.1 |
| Weight [kg]: | 7.000 | Checked: | | | | 6 | +0.2 |
| Material: | - | Approved: | 100505 | juwr | | 30 | +0.3 |
| Dim: | - | Wear/Spare part: | Spare | | | 120 | +0.5 |
| | | Design home: | S | | | 400 | +0.8 |
| | | | | | | 1000 | +1.2 |
| | | | | | | 2000 | +2.0 |
| | | | | | | 4000 | +3.0 |
| | | | | | | 8000 | +5.0 |
| | | | | | | 12000 | +8.0 |
| | | | | | | 18000 | +12.5 |
| | | | | | | 25000 | +20.0 |
| | | | | | | 30000 | +25.0 |
| | | | | | | 40000 | +30.0 |
| | | | | | | 50000 | +35.0 |
| | | | | | | 60000 | +40.0 |
| | | | | | | 70000 | +45.0 |
| | | | | | | 80000 | +50.0 |
| | | | | | | 90000 | +55.0 |
| | | | | | | 100000 | +60.0 |



Deckelblech mit Sicke
 Alternativ kann die Sicke durch 3 im Winkel von 120° angebrachten Vierkant - Profilen von 20 mm Länge ersetzt werden.
 Elektrisch leitend mit Deckel verbunden

Filtermaterial
 Cellulose FM0403
 weiß

Achtung
 Zur Ableitung statischer Aufladung müssen Deckelblech, Lochblech und Bodenblech unabhängig vom verwendeten Filtermaterial leitend miteinander verbunden werden.
 Widerstand < 1 Mega Ohm
 Das ist vom Hersteller zu prüfen und nachzuweisen.
 Jede Patrone erhält vom Hersteller einen Aufkleber am Bodenblech über vorhandene Leitfähigkeit

| | | | |
|---|-------------|----------------------------------|------------------|
| | | | |
| <small>DO NOT DISCLOSE, REPRODUCE, OR USE THIS DOCUMENT FOR MANUFACTURE WITHOUT WRITTEN CONSENT OF WHEELABRATOR</small> | | Filter | |
| Size: A2 | Scale: 1:2 | Rev: 00 | DeMe |
| Weight [kg]: 7.000 | Material: - | 1 | 100505 juwr |
| Dim: - | | Rev: EC | Date: Sign. |
| | | Created: - | DeMe |
| | | Checked: - | |
| | | Approved: 100505 juwr | |
| | | Wear/Spare part: Spare | Origin: |
| | | Design home: S | Replacement for: |
| | | Filter cartridge 21 m2 Cellulose | |
| | | Drawing No. 5-1601-071 | Revision 1 |
| | | sheet of: 1 | Minor rev: 0 |
| | | Replaced by: | |